

# BOURNE ELSEA PARK CHURCH OF ENGLAND PRIMARY ACADEMY

Chief Executive Officer: Mrs S J Moore

Executive Headteacher: Mr P Bellamy

Email: [BEP.enquiries@abbeyacademies.co.uk](mailto:BEP.enquiries@abbeyacademies.co.uk)

Sandown Drive  
Bourne

Tel: 01778 426968

9<sup>th</sup> October 2023

Dear Parent/Carer

## YEAR 6 VISIT TO GRESSENHALL MONDAY 20<sup>th</sup> NOVEMBER 2023

As part of our World War 2 topic, we have arranged for Year 6 to visit Gressenhall, Dereham on **Monday 20<sup>th</sup> November**, to take part in a WW2 evacuation experience. We will be joined by our Year 6 peers from Colsterworth.

Pupils will learn through role play and discover the sights, smells, and sounds of a working farm, a 1940s kitchen and an Anderson Shelter as they experience life in the past. They will meet costumed historical characters, engage in a series of meaningful activities, and have plenty of opportunities to ask questions.

Children should arrive at school no later than **7.30 a.m.** as the coach will leave by 7.45 a.m. We will be travelling with our peers from Colsterworth, and we aim to return to school for **4.25 p.m.** Please check ParentMail for any updates.

To help make our day more authentic, and to enhance and bring to life the whole experience of life as a WW2 evacuee we are asking the children to dress as children did in the 1940s. The outfit can be very simple and does not need to be a purchased costume. Please see the attached suggestion sheet but if you have any questions or would like any ideas for a costume then please do let me know.

The children will need to bring with them a packed lunch and plenty of drinks for the day (no fizzy drinks). As some sessions take place outdoors, they will need sensible footwear and if the weather is cold or wet, a warm or waterproof coat (it doesn't need to be 1940s style!).

We are asking for a voluntary contribution of £19.20 per child towards the cost of the visit. Please be aware that as a school we cannot go ahead if we run the risk of making a loss and this visit will not therefore go ahead without sufficient support. When deciding whether or not to run such an event, consideration has been given to the increased pressure on family finances due to the current economic climate. Please do let us know if you require any additional support in this respect by emailing [BEP.enquiries@abbeyacademies.co.uk](mailto:BEP.enquiries@abbeyacademies.co.uk) Payment should be made by ParentMail +Pay **Friday 17<sup>th</sup> November**.

We are looking forward to an exciting day but if you do have any questions in the meantime, please do not hesitate to contact me.

Yours sincerely

A Worrall  
Miss A Worrall

# Evacuation Day – Costume Ideas

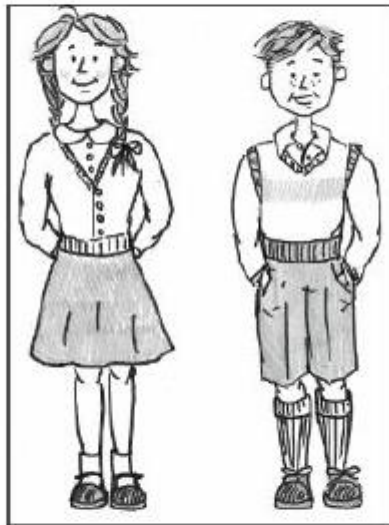
To make the day more immersive, the children might like to dress as an evacuee. Here are some ideas to help.

If the weather is cold please bring a coat with you. Don't worry! It doesn't need to be 1940's style!

## Clothes

### Girls

- Straw hat, woolly hat or beret
- Hair worn loose, half up, or in plaits
- Hair tied with ribbons or clipped with a slide
- Plain skirt and blouse
- Plain dress
- Knitted V neck jumper or a cardigan
- White long socks or ankle socks
- Plain shoes
- No logos



### Boys

- Cap
- Hair combed in a side parting
- Plain shirt with a collar
- Knitted V neck jumper or tank top
- Short trousers ie grey/black school shorts or cut down old trousers
- Blazer or plain jacket
- Long socks
- Dark shoes or boots
- No logos